

s c i e n c e

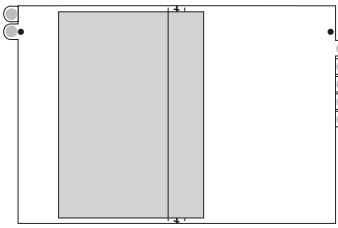
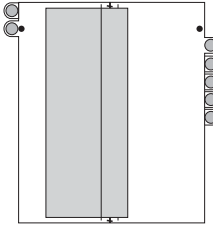


d e s i g n

**Graphics Lab Pricing
Sign Display Hardware
August, 2006**

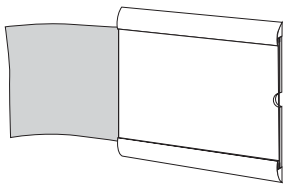
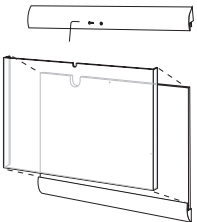
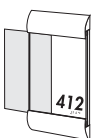
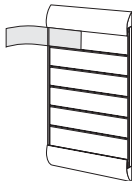
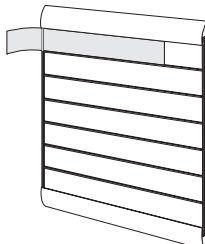
Sign Book™

Price includes design and production of color graphic protocols to fit your specific needs and assembly of books.

		Full Letter Size	Half Letter Size		
				PAGE SPREADS	
		Your Sign Book will work best if each page spread covers one topic. One facing page spread will be visible at all times.			
OPTIONS	PRICE, BLANK BOOK	PRICE, INCLUDING PROTOCOLS (minimum 50 units)	OPTIONS	PRICE, BLANK BOOK	PRICE, INCLUDING PROTOCOLS (minimum 50 units)
4 page book	\$30	\$60	4 page book	\$30	\$60
5 page book	\$32.50	\$65	5 page book	\$32.50	\$65
6 page book	\$35	\$70	6 page book	\$35	\$70

Window Frame™

Price does not include design and production of sign graphics. See our web application, Lab Graphics Studio for creating and managing sign graphics.

	WF.10	Letter Size - Open 2 Sides	For easy posting and changing of graphics outside of doors. Standard clear back panel allows mounting on windows for extra visibility. (less than 50 units)	<table border="0"> <tr> <th>OPTIONS</th> <th>PRICE</th> <th>FRAME COLORS</th> </tr> <tr> <td>Standard Black Back</td> <td>\$55</td> <td rowspan="3">Standard frame finish is clear anodized. For certain quantities, color anodizing and paint colors can be specified. Please inquire.</td> </tr> <tr> <td>ADA - compliant braille and tactile numbers</td> <td>call</td> </tr> <tr> <td>DuraGlow Insert</td> <td>\$40</td> </tr> </table>	OPTIONS	PRICE	FRAME COLORS	Standard Black Back	\$55	Standard frame finish is clear anodized. For certain quantities, color anodizing and paint colors can be specified. Please inquire.	ADA - compliant braille and tactile numbers	call	DuraGlow Insert	\$40
OPTIONS	PRICE	FRAME COLORS												
Standard Black Back	\$55	Standard frame finish is clear anodized. For certain quantities, color anodizing and paint colors can be specified. Please inquire.												
ADA - compliant braille and tactile numbers	call													
DuraGlow Insert	\$40													
	WF.10	Letter Size - Removable Locking Lens	Prevents unauthorized access to graphics. A set screw locks the header. Choose polycarbonate construction for extra strength and for environments that require regular sterilization.	<table border="0"> <tr> <td>Standard Black Back</td> <td>\$95</td> <td></td> </tr> </table>	Standard Black Back	\$95								
Standard Black Back	\$95													
	WF.11	3" x 5" Size - Open 2 Sides	Holds 3" x 5" graphic. Ask about custom sizes.	<table border="0"> <tr> <td>Standard Clear Back</td> <td>\$45</td> <td></td> </tr> <tr> <td>ADA - Compliant Braille and Tactile Numbers</td> <td>\$55</td> <td></td> </tr> </table>	Standard Clear Back	\$45		ADA - Compliant Braille and Tactile Numbers	\$55					
Standard Clear Back	\$45													
ADA - Compliant Braille and Tactile Numbers	\$55													
	WF.D	Wayfinding - 1" x 5" Strips	Open sides allow easy yet secure insertion of graphic strips into slots. Stainless steel dividers separate the slots. Strips can be vinyl or heavy papers and are provided by the end user or by Graphics Lab. Customizing available.	<table border="0"> <tr> <td>Opaque Back</td> <td>\$85</td> <td>5 Slots, for each additional slot, add \$2.50</td> </tr> <tr> <td>Clear Back, for Mounting on Glass</td> <td>\$90</td> <td>5 Slots, for each additional slot, add \$2.50</td> </tr> </table>	Opaque Back	\$85	5 Slots, for each additional slot, add \$2.50	Clear Back, for Mounting on Glass	\$90	5 Slots, for each additional slot, add \$2.50				
Opaque Back	\$85	5 Slots, for each additional slot, add \$2.50												
Clear Back, for Mounting on Glass	\$90	5 Slots, for each additional slot, add \$2.50												
	WF.D1	Wayfinding - 2" x 11" Strips	Open sides allow easy yet secure insertion of graphic strips into slots. Stainless steel dividers separate the slots. Strips can be vinyl or heavy papers and are provided by the end user or by Graphics Lab. Customizing available.	<table border="0"> <tr> <td>Opaque Back</td> <td>\$105</td> <td>5 Slots, for each additional slot, add \$2.50</td> </tr> <tr> <td>Clear Back, for Mounting on Glass</td> <td>\$110</td> <td>5 Slots, for each additional slot, add \$2.50</td> </tr> </table>	Opaque Back	\$105	5 Slots, for each additional slot, add \$2.50	Clear Back, for Mounting on Glass	\$110	5 Slots, for each additional slot, add \$2.50				
Opaque Back	\$105	5 Slots, for each additional slot, add \$2.50												
Clear Back, for Mounting on Glass	\$110	5 Slots, for each additional slot, add \$2.50												

WindowGrid™
Display System

Price does not include design and production of sign graphics. See our web application, Lab Graphics Studio, at our website for creating and managing sign graphics.

<p>WG-10</p>	<p>1 Panel Configuration</p>	<p>Standard 1-window configuration with a clear back panel can be used on the wall or on interior windows.</p> <p>PRICE (less than 50 units)</p> <p>Standard Clear Back - Horizontal \$54 Standard Clear Back - Vertical \$60</p>
<p>vertical</p> <p>WG-21</p>	<p>2 Panel Configuration</p>	<p>Standard 2-window configuration with a clear back panel can be used on the wall or on interior windows.</p> <p>PRICE (less than 50 units)</p> <p>Standard Clear Back \$70</p>
<p>horizontal</p>	<p>Standard Clear Back \$95</p> <p>Extra Panel Configurations</p>	<p>Expand WindowGrid to hold extra panels. Let your function dictate the form.</p> <p>For Each Extra Vertical Panel, Add \$40 Minimum order ten units.</p>
	<p>Extra Windows</p>	<p>Makes it easy to rotate sign and training graphics from a central location.</p> <p>Extra Windows, Each (less than 50 units) \$10</p>
	<p>Dry Marker Board</p>	<p>Instant messaging for researchers and safety personnel.</p> <p>Letter Size Dry Marker Board, Each \$8</p>
	<p>Locking Header with Security Driver</p>	<p>Screw post prevents unauthorized access to signs. One driver supplied.</p> <p>Locking Header, any size WindowGrid, add \$20 to price of each sign. Extra Drivers, each \$10</p>
<p>244</p>	<p>ADA-Compliant Header with Braille and Tactile Lettering</p>	<p>Separate header fits on top of WindowGrid.</p> <p>ADA Header, any size WindowGrid, add \$45 to price of each sign.</p>



s c i e n c e



d e s i g n

Pricing & Service Levels

USAGE LEVEL	SIGN COST	SERVICE COST														
<p>SYSTEM</p> <p>Lab Graphics Studio installed by our IT professionals onto your server. We customize it to meet your needs.</p>	<p>VARIABLE</p> <p>The most economical way to manage your signs across multiple sites. If you want LGS installed on your intranet system, please inquire and we will give you a request for proposal (RFP) form.</p>	<p>VARIABLE</p> <p>Choose from a menu of service options at the system level. We can be available for service and upgrades as desired.</p>														
<p>SUBSCRIPTION</p> <p>Choose a number of signs and reprints you expect to use in a year. If the number changes, you can modify it easily. We work with you to set up templates.</p>	<table border="1"> <thead> <tr> <th>SIGNS/YEAR</th> <th>SUBSCRIPTION</th> </tr> </thead> <tbody> <tr> <td>50</td> <td>\$500</td> </tr> <tr> <td>100</td> <td>\$950</td> </tr> <tr> <td>150</td> <td>\$1350</td> </tr> <tr> <td>250</td> <td>\$2180</td> </tr> <tr> <td>500</td> <td>\$4250</td> </tr> <tr> <td>1000</td> <td>\$8000</td> </tr> </tbody> </table>	SIGNS/YEAR	SUBSCRIPTION	50	\$500	100	\$950	150	\$1350	250	\$2180	500	\$4250	1000	\$8000	<p>An initial set-up fee of \$1500 gives you the opportunity to create your templates and get your facilities up and running.</p>
SIGNS/YEAR	SUBSCRIPTION															
50	\$500															
100	\$950															
150	\$1350															
250	\$2180															
500	\$4250															
1000	\$8000															
<p>ACCESS</p> <p>Try out the system and see how it works.</p>	<p>\$12 per sign</p>	<p>Self Service</p>														
<p>INTERNET</p>																

Graphics Lab, Inc.
 A Division of Perkins & Will
 1382 Peachtree
 Atlanta, GA 30309

Toll Free 877-765-7499
 Garth Johnson
 Director of Marketing
 404-443-7686

Authorized Sample - DO NOT REPRODUCE - Lab & Safety Lab Signs™ Copyright 2001 Graphics Lab
ANIMAL BIOSAFETY NC STATE UNIVERSITY
 BSL 3

SAFETY EQUIPMENT

1. PPE Personal protective equipment is used for all activities involving manipulations of infectious materials or infected animals.

a. SOLID FRONT GOWNS Wrap-around or solid-front gowns or uniforms are worn by personnel entering the animal room. Front-button laboratory coats are unacceptable. Protective gowns should be appropriately contained until decontamination or disposal.

b. GLOVES Personnel wear gloves when handling infected animals. Gloves are removed aseptically and autoclaved with other animal room wastes before disposal.

c. FACE & EYE Appropriate face/eye and respiratory protection is worn by all personnel entering animal rooms housing maximum priorities.

d. FOOTWEAR Boots, shoe covers, or other protective footwear, and disinfectant footbaths are available and used when indicated.

2. Physical Containment Physical containment devices and equipment appropriate for the animal species are used for all procedures and manipulations of infectious materials or infected animals.

3. Reduce Aerosols The risk of infectious aerosols from infected animals or their bedding also can be reduced if animals are housed in sealed containment cooling systems, such as open cages placed in ventilated enclosures (e.g., laminar flow cabinets), solid wall and bottom cages covered with filter bonnets, or other equivalent.

Call Graphics Lab at 877-769-7455 for customized requests or visit our website to see our integrated system of lab graphic management.

*"Medical scientists are nice people, but you should not let them treat you."
 — Jacques Bertr (1865-1949), German surgeon.*

Design & Production Services

Design and production of...

Hazard Protocol Graphics
 Egress Maps from CAD files

\$65 per hour + printing

LABORATORY BIOHAZARDOUS WASTE & SHARPS DISPOSAL

LIQUID BIOHAZARDOUS WASTE
 Treat with 1 part bleach for every 10 parts liquid, with minimum of 30 minutes contact time prior to sink disposal. Liquids such as...

- Blood and body fluids
- Cell culture fluids
- Liquids containing viable rDNA materials

DRY BIOWASTE CONTAINERS
 Non-sharp biohazardous waste such as...

- Gloves
- Benchpaper
- Plastic petri plates
- Plastic tubes
- Disposable tyvek labcoats
- Disposable facehats

SHARPS CONTAINERS
 Sharp (physically dangerous) waste, regardless of whether it is biohazardous, such as...

- Needles & syringes
- Pasteur pipettes
- Pipette tips
- Glass & plastic serological pipettes
- Glass slides
- Glass tubes
- Broken glass
- Glass bottles

REGULAR TRASH OR RECYCLABLES
 Non-sharp, non-contaminated waste such as...

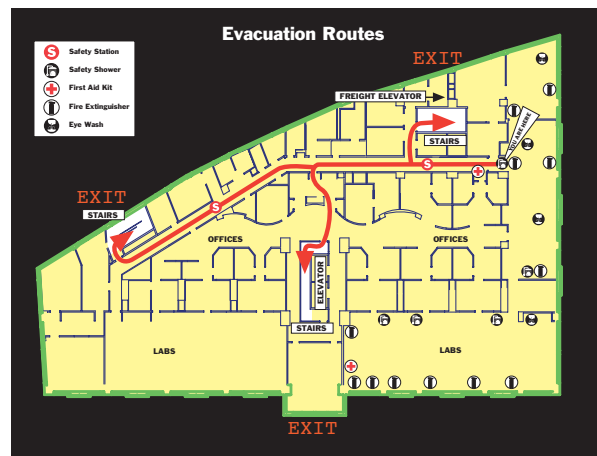
- Paper towels for handwashing
- Pipette wrappers (R)
- Packing slips (R)
- White & colored paper (R)
- Lab product catalogs (R)

R = Recyclable

For additional biohazard or sharps containers, or to report improper disposal so that the EHS technicians may be alerted, please contact EHS at x5232 (Cambridge) or x1042 (Knobover).

No animal carcasses, radioactive or chemically-contaminated waste!! Please use blue recyclable trash bins for non-contaminated paper and cardboard.

DESIGN COPYRIGHT 2001 GRAPHICS LAB, INC. - DO NOT REPRODUCE - FOR REPRINTS PLEASE CALL 877-769-7455



Graphics Lab, Inc
1382 Peachtree Sreet
Atlanta, GA 30309

877-769-7455

www.graphicslabsigns.com